

Sans

No traffic received

If there is no traffic in range / received, Butterfly Displays show a special information screen with an UTC Clock and information about GPS and FLARM system status of the connected collision warning unit. Green indicators show normal operation, red ones indicate failures.

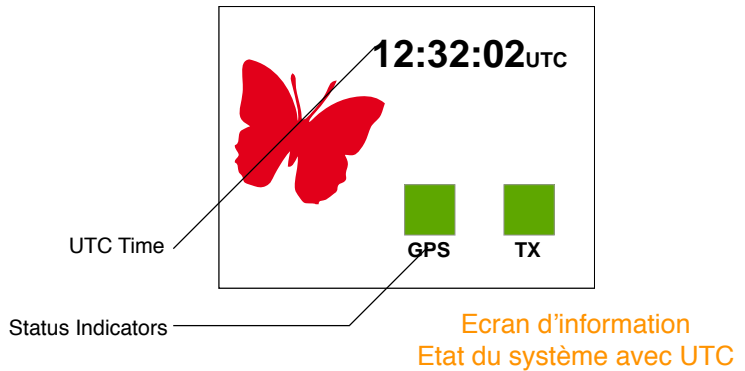


Abbildung 7.1: Info-Screen with status indicators and UTC time

A red GPS-Indicator means that the connected collision warning unit does not have sufficient GPS reception to determine the current position.

Avec

Traffic is received

If traffic is received, the pilot is able to select different views. A radar-like view with different zoom-factors and a list-view are available.

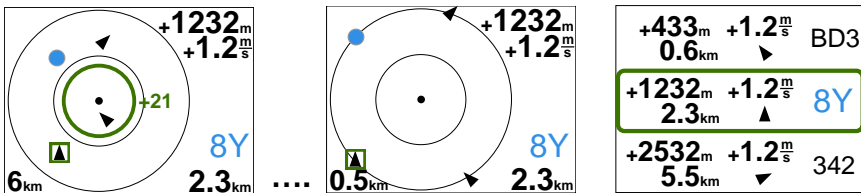


Abbildung 7.2: Different views when traffic is received (not all zoom-scales shown)

Différents écrans lors de présence de trafic